

# Magic Bowling Cup - Duben 2013



<b>Oil Pattern Distance:</b>	<b>35 Feet</b>	<b>Reverse Brush Drop:</b>	<b>35 Feet</b>	<b>Oil Per Board:</b>	<b>40 uL</b>
<b>Forward Oil Total:</b>	<b>14.64 mL</b>	<b>Reverse Oil Total:</b>	<b>8.2 mL</b>	<b>Volume Oil Total:</b>	<b>22.84 mL</b>
<b>Forward Boards Crossed:</b>	<b>366 Boards</b>	<b>Reverse Boards Crossed:</b>	<b>205 Boards</b>	<b>Total Boards Crossed:</b>	<b>571 Boards</b>

	Start	Stop	Loads	Speed	Crossed	Start	End	Feet	T.Oil
1	2L	2R	1	14	37	0.0	0.0	0.0	1480
2	3L	3R	1	14	35	0.0	1.9	1.9	1400
3	4L	4R	1	14	33	1.9	3.8	1.9	1320
4	5L	5R	3	14	93	3.8	9.7	5.9	3720
5	6L	6R	3	18	87	9.7	17.3	7.6	3480
6	7L	7R	3	18	81	17.3	24.9	7.6	3240
7	2L	2R	0	22	0	24.9	35.0	10.1	0

Navigation: Forward Reverse More

	Start	Stop	Loads	Speed	Crossed	Start	End	Feet	T.Oil
1	2L	2R	0	26	0	35.0	22.0	-13.0	0
2	8L	8R	1	18	25	22.0	19.5	-2.5	1000
3	7L	7R	2	18	54	19.5	14.4	-5.1	2160
4	6L	6R	2	14	58	14.4	10.5	-3.9	2320
5	5L	5R	1	14	31	10.5	8.6	-1.9	1240
6	2L	2R	1	14	37	8.6	6.7	-1.9	1480
7	2L	2R	0	14	0	6.7	0.0	-6.7	0

Navigation: Forward Reverse More

Conditioner: Infinity

TransferType: Transfer Roller

Forward



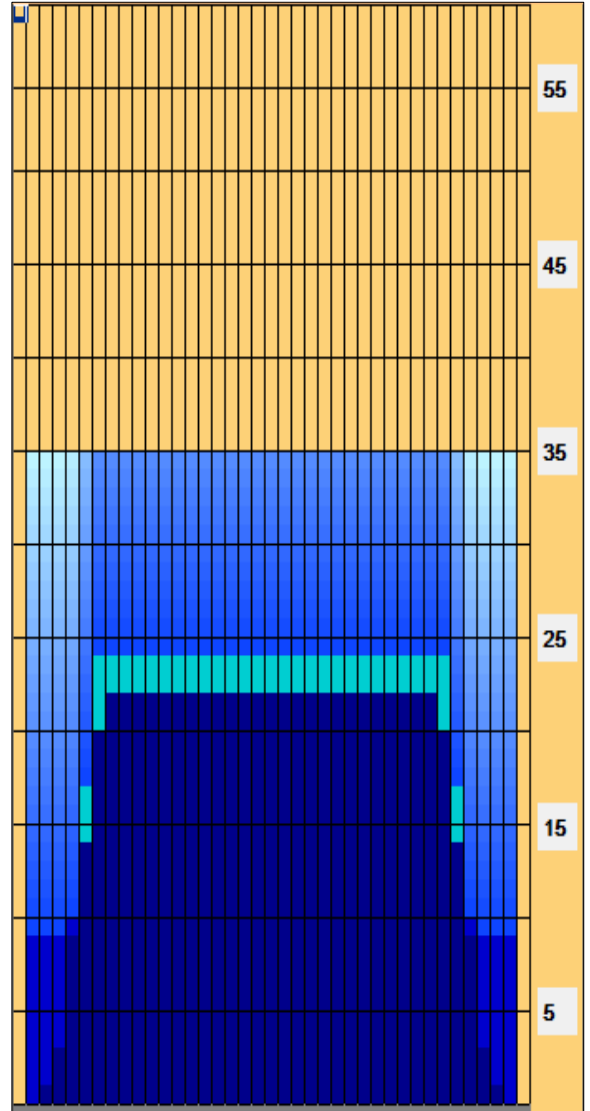
Reverse



Combined



Buff



Item	3L-7L:18L-18R	8L-12L:18L-18R	13L-17L:18L-18R	18L-18R:17R-13R	18L-18R:12R-8R	18L-18R:7R-3R
Description	Outside Track:Middle	Middle Track:Middle	Inside Track:Middle	Middle:Inside Track	Middle:Middle Track	Middle:Outside Track
Track Zone Ratio	2.07	1	1	1	1	2.07

